

# ASH GROVE NEWS

WEEK ENDING 17.04.2026

## What's On?

World Design Day	Monday 27 <sup>th</sup> April
Year 3B Inspire Session	Wednesday 29 <sup>th</sup> April 2:15pm - 3:15pm
Year 3/4 Inspire Session	Wednesday 6 <sup>th</sup> May 2:15pm - 3:15pm
Year 6 SATs	Monday 11 <sup>th</sup> May - Thursday 14 <sup>th</sup> May
Year 6 SATs Party	Friday 15 <sup>th</sup> May (More info to follow)
Book Look	Tuesday 19 <sup>th</sup> May 3:15pm - 3:45pm
Year 4E Inspire Session	Wednesday 20 <sup>th</sup> May 2:15pm - 3:15pm
EYFS Reading Morning	Thursday 21 <sup>st</sup> May

### STAR OF THE WEEK

Nursery - Finley F  
Reception - Isabella A  
1A - Iris-J J  
1/2R - Ariamae W  
2B - Daniel M-L  
3B - Neve B  
3/4MB - Whole Class  
4E - Cole S  
5J - Toby A  
6W - Phoebe W-J

### ATTENDANCE (TARGET 97%)

**Whole School**

**92.43%**

**Compulsory School Age  
Attendance**

**92.49%**

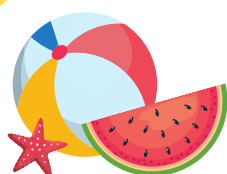
**Winning Class**

**4E 97.14%**



## Pupil of the Week

We loved welcoming parents/carers into our assembly today to celebrate the wonderful achievements of our Pupil of the Week. These children have been chosen for a variety of excellent reasons and we are extremely proud of them all.



## Summer Fair

We are very excited for our upcoming Summer Fair!

Please make note that the date has changed to

**Tuesday 30<sup>th</sup> June 2pm - 4pm.**

Don't forget to put the date in your calendar!



## ASH GROVE UNIFORM

- Pale blue or white polo shirt
- Royal blue cardigan or sweatshirt
- Grey trousers/shorts/skirts/pinafore
- Blue and white gingham dress (optional in summer)
- Suitable shoes that are black
- Temporary tattoos, make up, smart watches and jewellery are not permitted apart from small studs and an analogue watch





# SEND Maths

## Parent Workshop

All are welcome to attend our planned sessions to work alongside our SENDCO to support you with all SEND related queries.

All hosted in Ash Grove Primary School

### INFORMATON

**Thursday 21st May 2026 at 2pm**

Come and look at the different ways that you can support your child to access early math skills at home and different ways that you can engage them to apply their knowledge of number, shape and measures.

Use this opportunity to come and work with your child and complete a range of activities together.

Refreshments will be provided on entry.



## School Values

Over the next few weeks, we are focusing on our value of Excellence.

Please talk to your children about the definition of excellence and different ways in which they can demonstrate this value in school.

## Excellence

We strive for excellence by never settling for good enough and working hard to achieve wonderful work.

## Excellence

"Practice and persistence until it is right."

What does this mean?

Doing it over and over again until it works.

## School Values



Support



Collaboration



Excellence



Innovation

## Ash Grove Safeguarding Team



Mrs Gawthorp - HT  
DSL



Miss Bartle - DHT  
DDSL



Miss Goodwin -  
Attendance Officer  
DDSL



Mrs Maxfield -  
Learning Mentor  
DDSL



Mrs Wolstenholme -  
EYFS Leader  
DDSL



Mr Wilbor - Teacher  
DDSL



Miss Jobson - Teacher  
DDSL



Mrs Scott - SENDCo  
DDSL



Please note school contact email:  
[ag-enquiries@inspirepartnership.org.uk](mailto:ag-enquiries@inspirepartnership.org.uk)

